

Primary 5 Science (Term 4) - Henry Park

[Assign Test](#)

Test Introduction

[+ Add Introduction](#)

56 Questions (72 Points)

Question Bank: 9,275 Questions

Test Questions 1 Test Assignment

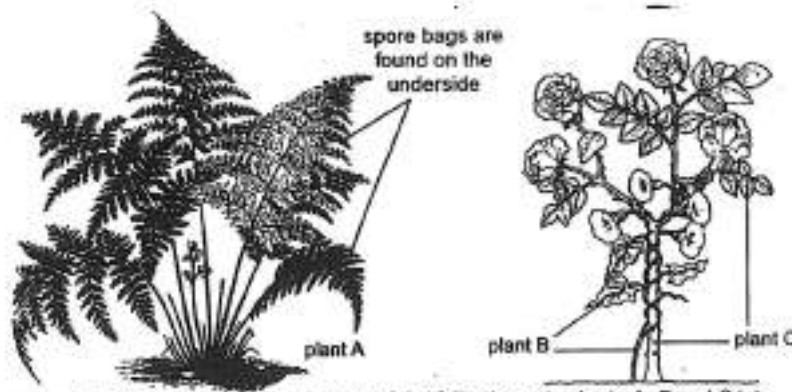
Question 1

Primary 5 Science » Primary 5 Science (Term 4)

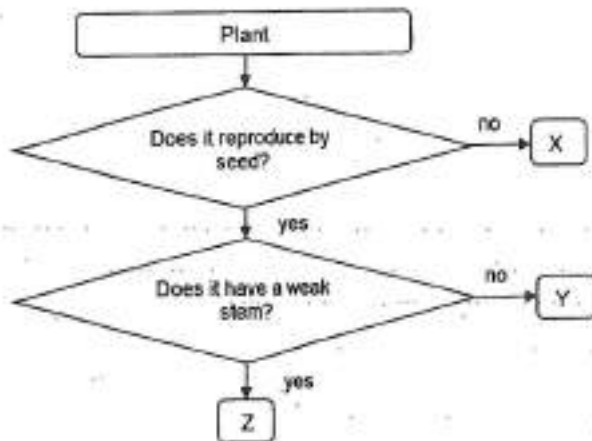
2 pts

For each question, four options are given. One of them is the correct answer. (56 marks)

The diagrams below show three types of plants A, B and C.



Based on the information above, which one of the following puts plants A, B and C into the correct groups?



A) Group X Group Y Group Z

✓

A	C	B
---	---	---

B)

Group X	Group Y	Group Z
C	A	B

C)

Group X	Group Y	Group Z
B	A	C

D)

Group X	Group Y	Group Z
A	B	C

Question Type: Multiple Choice
Randomize Answers: No
Date Added: Tue 27th Jul 2021
Last Modified: N/A
QID#: 28,531,727

[Answers](#) |
 [Edit](#) |
 [Duplicate](#) |
 [Used In](#) |
 [Reorder](#)

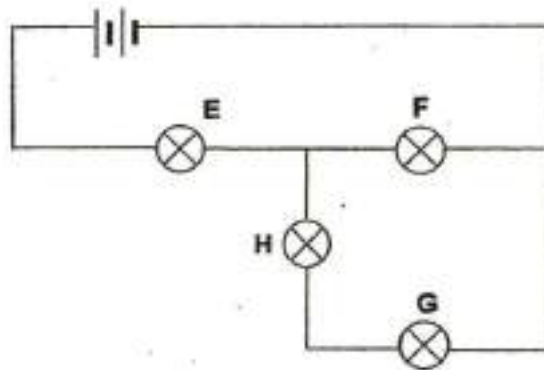
[Remove From Test](#)

Question 2

Primary 5 Science » Primary 5 Science (Term 4)

2 pts

The diagram below shows an electric circuit with four identical bulbs, E, F, G and H.



Based on the circuit diagram above, complete the table given below correctly. Match the options below:

Clue

Match

Bulb fused in the circuit	Number of bulbs remain lit
	2

G

Points: +1 -0

Bulb fused in the circuit	Number of bulbs remain lit
	3

F

Points: +1 -0

Question Type: Matching
Shuffle Mode: Shuffle Matches Only

Date Added: Tue 27th Jul 2021
 Last Modified: N/A
 QID#: 28,531,723

Answers | Edit | Duplicate | Used In | Reorder

Remove From Test

Question 3

Primary 5 Science » Primary 5 Science (Term 4)

2 pts

Jamie removed a part of the stem of a plant as shown in Diagram 1.

After some time, she noticed a swelling at part X of the stem as shown in Diagram 2.

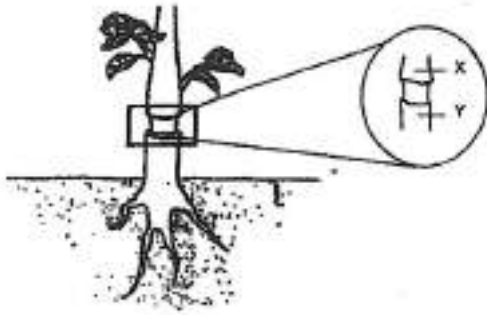


Diagram 1

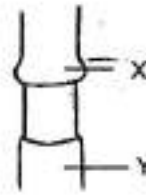


Diagram 2

Based on the information given, which one of the following statements is correct?

- A) The plant will continue to grow and reproduce.
- ✓ B) The plant will die as food from the leaves cannot reach the roots.
- C) The plant will die as food and water cannot be transported around the plant.
- D) The plant will wither and die as water from the roots cannot reach other parts of the plant.

Question Type: Multiple Choice
 Randomize Answers: No
 Date Added: Tue 27th Jul 2021
 Last Modified: N/A
 QID#: 28,531,724

Answers | Edit | Duplicate | Used In | Reorder

Remove From Test

Question 4

Primary 5 Science » Primary 5 Science (Term 4)

2 pts

A group of boys were trapped in a sealed cave when rising flood waters prevented them from moving towards the only opening of the cave.

Which one of the following most likely shows the changes in the composition of the air inside the cave after two hours?

A)

Carbon dioxide	Oxygen	Water vapour
decreased	increased	increased

B)

Carbon dioxide	Oxygen	Water vapour

decreased	increased	remained unchanged
-----------	-----------	--------------------

✓ C)

Carbon dioxide	Oxygen	Water vapour
increased	decreased	increased

D)

Carbon dioxide	Oxygen	Water vapour
increased	decreased	remained unchanged

Question Type: Multiple Choice
Randomize Answers: No
Date Added: Tue 27th Jul 2021
Last Modified: N/A
QID#: 28,531,725

[↗ Answers](#) | [✎ Edit](#) | [📄 Duplicate](#) | [📌 Used In](#) | [⬇ Reorder](#)

[Remove From Test](#)

Question 5

Primary 5 Science » Primary 5 Science (Term 4)

2 pts

The statements, A, B, C and D, describe a part of the process of how fruits and seeds are formed in a flowering plant.

- A The male and female reproductive cells fuse in the ovule.
- B The pollen lands on the stigma.
- C The anther releases the pollen.
- D The pollen tube grows towards the ovule.

Which one of the following shows the correct sequence of the process? ____

- A) B, C, A, D
- B) B, C, D, A
- C) C, B, A, D
- ✓ D) C, B, D, A

Question Type: Multiple Choice
Randomize Answers: No
Date Added: Tue 27th Jul 2021
Last Modified: N/A
QID#: 28,531,726

[↗ Answers](#) | [✎ Edit](#) | [📄 Duplicate](#) | [📌 Used In](#) | [⬇ Reorder](#)

[Remove From Test](#)

Question 6

Primary 5 Science » Primary 5 Science (Term 4)

2 pts

Which of the following statements is / are not correct of a cockroach and a mosquito?

- A Their young live in water.
- B Their young do not have wings.
- C They have 3 stages in their life cycles.

- A) C only
- B) A and B only
- C) B and C only
- ✓ D) A and C only

Question Type: Multiple Choice
Randomize Answers: No
Date Added: Tue 27th Jul 2021
Last Modified: N/A
QID#: 28,531,728

[Answers](#) | [Edit](#) | [Duplicate](#) | [Used In](#) | [Reorder](#)

[Remove From Test](#)

Question 7

Primary 5 Science » Primary 5 Science (Term 4)

2 pts

Kai Seng recorded the physical traits of his parents and himself as shown in the table below.

Father	Mother	Kai Seng
short hair	long hair	short hair
brown eyes	black eyes	black eyes
single eyelid	double eyelid	single eyelid
attached earlobes	detached earlobes	attached earlobes
dimples	dimples	dimples

Which of the following are the physical traits Kai Seng inherited from his parents?

- A) length of hair and attached earlobes only
- B) dimples, single eyelid and length of hair only
- C) eye colour, dimples and attached earlobes only
- ✓ D) single eyelid, dimples, eye colour and attached earlobes only

Question Type: Multiple Choice
Randomize Answers: No
Date Added: Tue 27th Jul 2021
Last Modified: N/A
QID#: 28,531,729

[Answers](#) | [Edit](#) | [Duplicate](#) | [Used In](#) | [Reorder](#)

[Remove From Test](#)

Question 8

Primary 5 Science » Primary 5 Science (Term 4)

2 pts

Mei Ling wants to find out whether a fruit she has picked up is dispersed in the same way as the fruit shown in the diagram below.



Which of the following investigations should she carry out?

- A Observe if the fruit has a sweet smell.
- B Find the mass of the fruit by weighing it.
- C Cut open a fruit to check if it has small, hard seeds.

- A) A and B only
- ✓ B) A and C only
- C) B and C only
- D) A, B and C

Question Type: Multiple Choice
Randomize Answers: No
Date Added: Tue 27th Jul 2021
Last Modified: N/A
QID#: 28,531,730

[Answers](#) | [Edit](#) | [Duplicate](#) | [Used In](#) | [Reorder](#)

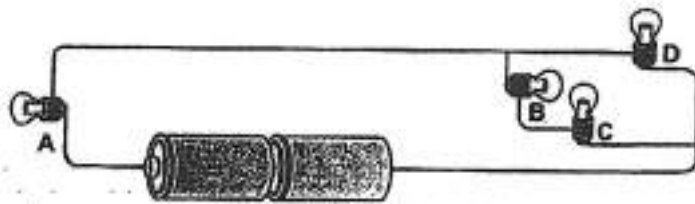
[Remove From Test](#)

Question 9

Primary 5 Science » Primary 5 Science (Term 4)

2 pts

Study the circuit shown below carefully.



When one of the bulbs is fused, three other bulbs remain unaffected and continue to light up.

Which one of the following is the fused bulb?

- A) A
- B) B
- C) C
- ✓ D) D

Question Type: Multiple Choice
Randomize Answers: No
Date Added: Tue 27th Jul 2021
Last Modified: N/A

QID#:

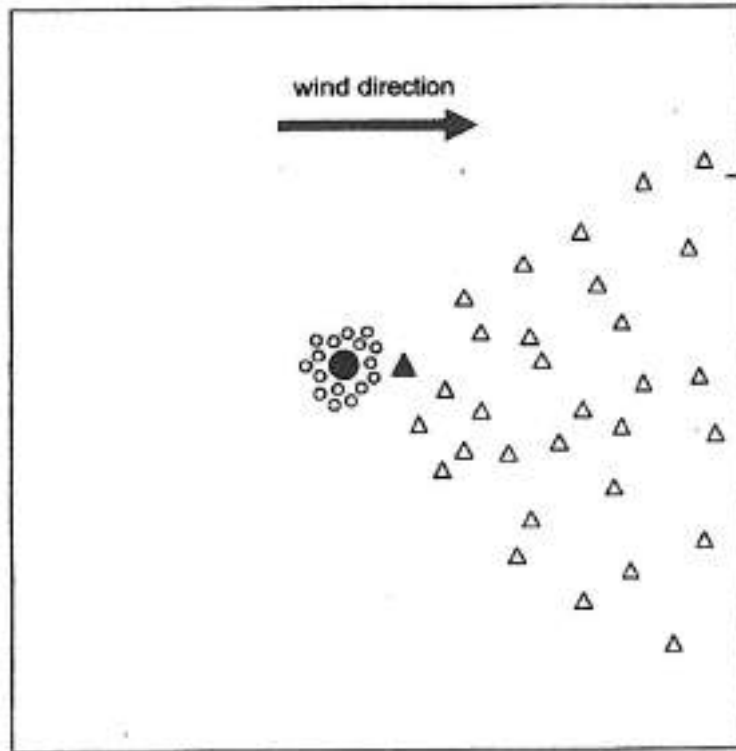
28,531,731

[Answers](#) | [Edit](#) | [Duplicate](#) | [Used In](#) | [Reorder](#)
[Remove From Test](#)**Question 10**

Primary 5 Science » Primary 5 Science (Term 4)

2 pts

The diagram shows the dispersal patterns of two types of plants.



Key		
parent plant	●	▲
young plant	○	△

How are the seeds of the two plants likely to be dispersed?

A)

Plant	
●	▲

Water	Wind
-------	------

B) Wind	Water
---------	-------

✓ C) Splitting	Wind
----------------	------

D) Splitting	Animal
--------------	--------

Question Type: Multiple Choice
Randomize Answers: No
Date Added: Tue 27th Jul 2021
Last Modified: N/A
QID#: 28,531,732

[Answers](#) | [Edit](#) | [Duplicate](#) | [Used In](#) | [Reorder](#)

[Remove From Test](#)

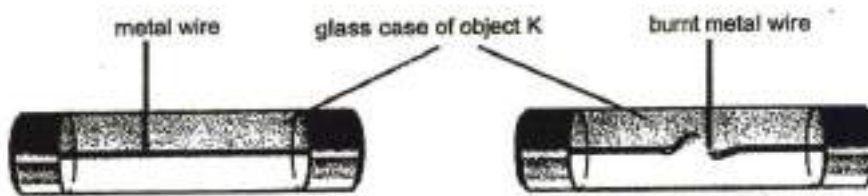
Question 11

Primary 5 Science » Primary 5 Science (Term 4)

2 pts

An electric circuit powers an oven. Object K is part of the electric circuit.

The diagram below shows object K.



Which one of the following would happen if the metal wire burns out in object K?

- A) The light inside the oven will be brighter.
- ✓ B) The oven will not be able to produce heat.
- C) The temperature in the oven will be higher.
- D) The oven will be able to heat the food in it faster.

Question Type: Multiple Choice
Randomize Answers: No
Date Added: Tue 27th Jul 2021
Last Modified: N/A
QID#: 28,531,733

[Answers](#) | [Edit](#) | [Duplicate](#) | [Used In](#) | [Reorder](#)

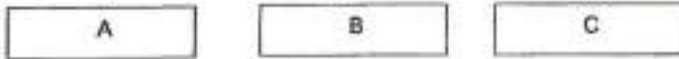
[Remove From Test](#)

Question 12

Primary 5 Science » Primary 5 Science (Term 4)

2 pts

Anthony is given three steel bars, A, B and C as shown below.



Anthony placed the steel bars next to each other and recorded his observations in the table below.

Arrangement of steel bars	Observation
	They moved towards and stuck to each other.
	They moved away from each other.
	They moved towards and stuck to each other.
	They moved towards and stuck to each other slightly.

Based on his observation, which of the following are definitely magnets?

- A) A and B only
- ✓ B) A and C only
- C) B and C only
- D) A, B and C

Question Type: Multiple Choice
 Randomize Answers: No
 Date Added: Tue 27th Jul 2021
 Last Modified: N/A
 QID#: 28,531,734

[Answers](#) | [Edit](#) | [Duplicate](#) | [Used In](#) | [Reorder](#)

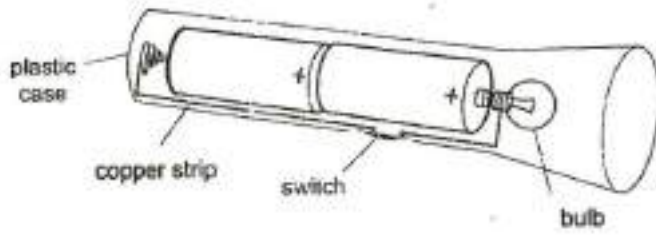
[Remove From Test](#)

Question 13

Primary 5 Science » Primary 5 Science (Term 4)

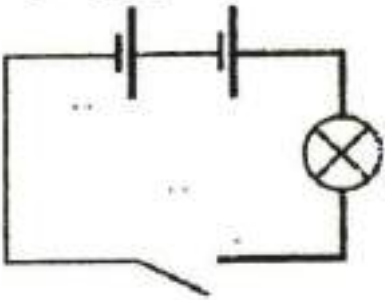
2 pts

The diagram shows a torchlight containing two batteries, a switch and a bulb.

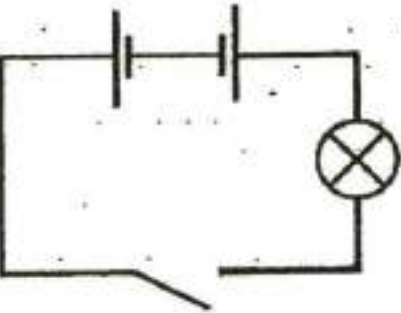


Which one of the following circuit diagrams represents circuit in the torchlight?

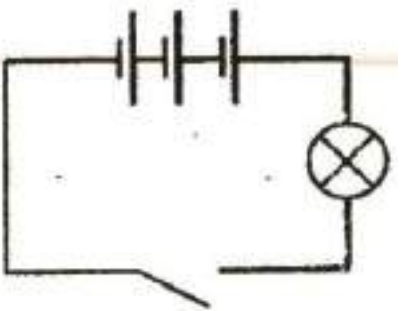
✓ A)



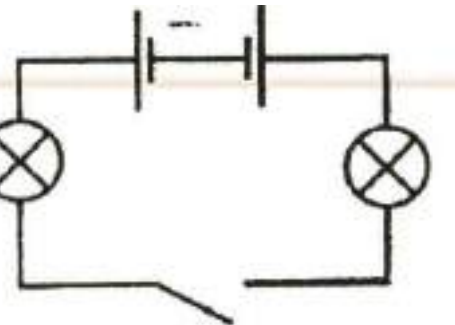
B)



C)



D)



Date Added: Tue 27th Jul 2021
 Last Modified: N/A
 QID#: 28,531,735

Answers | Edit | Duplicate | Used In | Reorder

Remove From Test

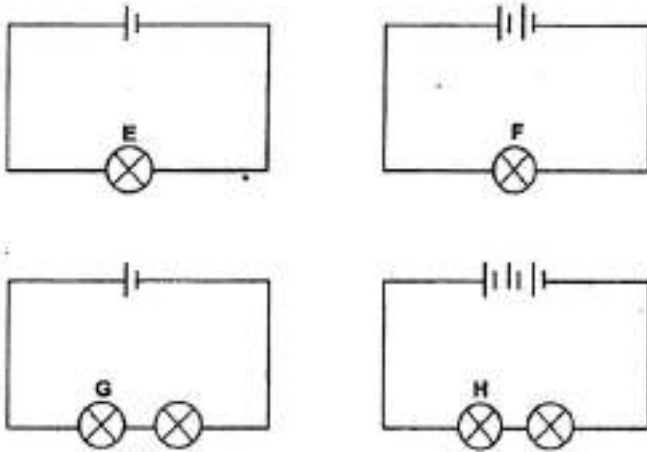
Question 14

Primary 5 Science » Primary 5 Science (Term 4)

2 pts

The diagram below shows four circuits with different arrangements of identical batteries and bulbs.

The bulbs in all the four circuits light up.



Which one of the following shows the brightness of the bulbs correctly?

- A)

Low	High
F	H G
- B)

Low	High
E	G H
- C)

Low	High
G	F H
- ✓ D)

Low	High
G	E F

Question Type: Multiple Choice
 Randomize Answers: No
 Date Added: Tue 27th Jul 2021
 Last Modified: N/A
 QID#: 28,531,736

Answers | Edit | Duplicate | Used In | Reorder

Remove From Test

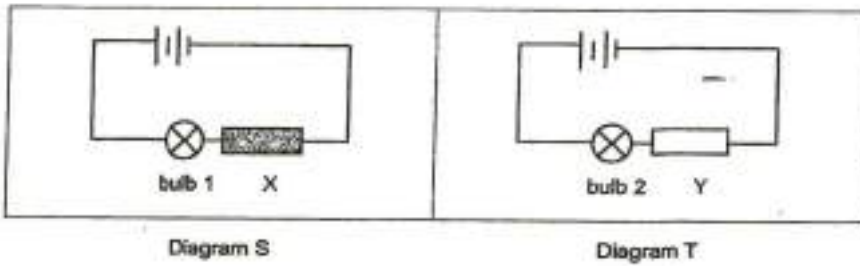
Question 15

Primary 5 Science » Primary 5 Science (Term 4)

2 pts

Diagrams S and T show two circuits with rods made of materials X and Y. The rods were placed across each circuit as shown below.

Identical batteries and bulbs were used in both circuits.



It was observed that bulb 1 did not light up but bulb 2 lit up brightly.

Based on the information given, which of the following statements are likely to be correct?

- A Bulb 1 has fused.
- B Material Y is a conductor of electricity.
- C Material X is a non-conductor of electricity.

- A) A and B only
- B) A and C only
- ✓ C) B and C only
- D) A, B and C

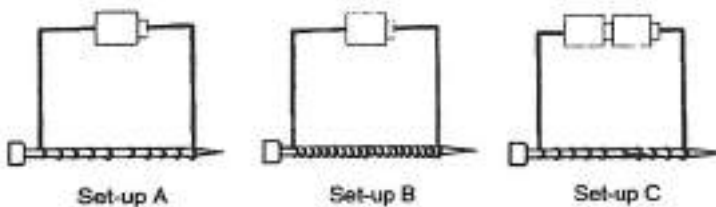
Question Type: Multiple Choice
 Randomize Answers: No
 Date Added: Tue 27th Jul 2021
 Last Modified: N/A
 QID#: 28,531,737

[Answers](#) |
 [Edit](#) |
 [Duplicate](#) |
 [Used In](#) |
 [Reorder](#)
[Remove From Test](#)

Question 16

Primary 5 Science » Primary 5 Science (Term 4) 2 pts

Janette prepared the following set-ups using identical batteries and iron nails. She measured the number of paper clips attracted to each iron nail.



Which of the following correctly matches the set-ups with the aims of the experiments Janette wants to conduct?

- ✓ A)

To find out whether the number of coils around the nail affects the number of paper clips attracted by the nail.	To find out whether the number of batteries affects the number of paper clips attracted by the nail.
Set-ups A and B	Set-ups A and C
- B)

To find out whether the number of coils	To find out whether the number of
---	-----------------------------------

around the nail affects the number of paper clips attracted by the nail.	batteries affects the number of paper clips attracted by the nail.
Set-ups B and C	Set-ups A and B

C) To find out whether the number of coils around the nail affects the number of paper clips attracted by the nail.	To find out whether the number of batteries affects the number of paper clips attracted by the nail.
Set-ups A and B	Set-ups B and C

D) To find out whether the number of coils around the nail affects the number of paper clips attracted by the nail.	To find out whether the number of batteries affects the number of paper clips attracted by the nail.
Set-ups A and C	Set-ups B and C

Question Type: Multiple Choice
 Randomize Answers: No
 Date Added: Tue 27th Jul 2021
 Last Modified: N/A
 QID#: 28,531,738

[Answers](#) | [Edit](#) | [Duplicate](#) | [Used In](#) | [Reorder](#)

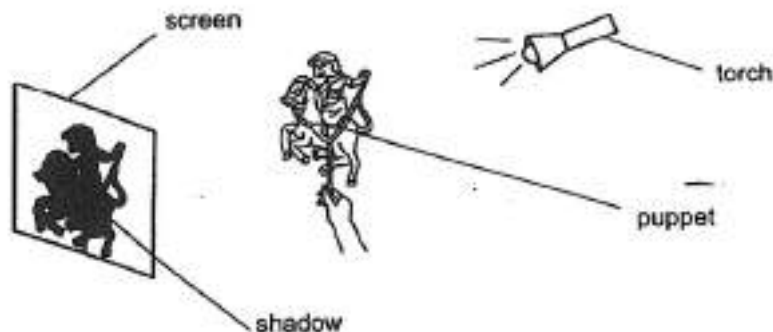
[Remove From Test](#)

Question 17

Primary 5 Science » Primary 5 Science (Term 4)

2 pts

A shadow play is performed by placing a puppet between a screen and a torch.



The shadow cast on the screen can be made bigger by _____.

- A) moving the torch further from the puppet
- B) moving the torch closer to the puppet
- C) moving the screen closer to the puppet
- D) moving the screen further from the puppet

- A) A only
- B) D only
- ✓ C) B and D only
- D) B and C only

Question Type: Multiple Choice
 Randomize Answers: No
 Date Added: Tue 27th Jul 2021

Last Modified: N/A
QID#: 28,531,739

[Answers](#) | [Edit](#) | [Duplicate](#) | [Used In](#) | [Reorder](#)

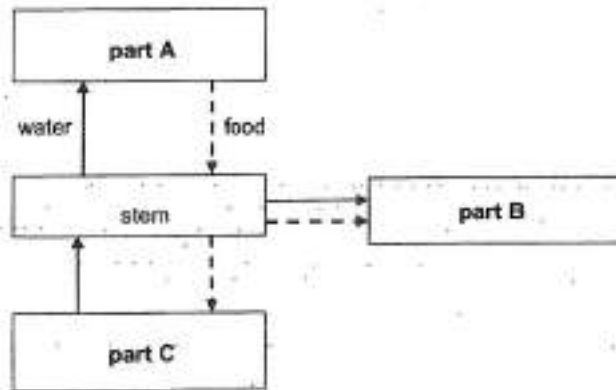
[Remove From Test](#)

Question 18

Primary 5 Science » Primary 5 Science (Term 4)

2 pts

Plant X produces sweet and juicy fruits. The diagram below shows the different parts of plant X and how substances are transported within the plant.



Which of the following correctly identifies part A, B and C?

- A)

Part A	Part B	Part C
fruit	leaf	root
- B)

Part A	Part B	Part C
leaf	root	fruit
- C)

Part A	Part B	Part C
root	fruit	leaf
- ✓ D)

Part A	Part B	Part C
leaf	fruit	root

Question Type: Multiple Choice
Randomize Answers: No
Date Added: Tue 27th Jul 2021
Last Modified: N/A
QID#: 28,531,740

[Answers](#) | [Edit](#) | [Duplicate](#) | [Used In](#) | [Reorder](#)

[Remove From Test](#)

Question 19

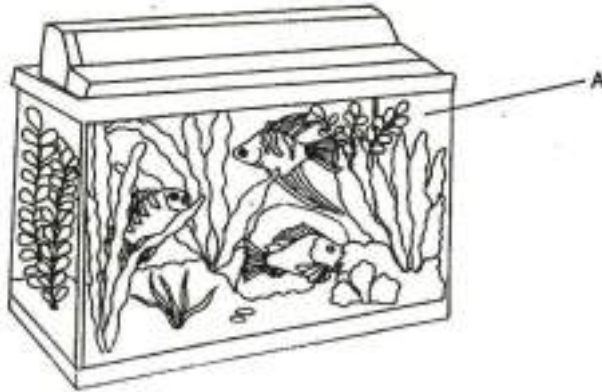
Primary 5 Science » Primary 5 Science (Term 4)

2 pts

The table below shows the properties of four different materials, W, X, Y and Z.

	Allows most light to pass through	Waterproof	Flexible
W		✓	✓
X	✓		✓
Y	✓	✓	
Z	✓	✓	✓

Key
✓ : present



Which of the following materials, W, X, Y, or Z is most suitable for making part A of the fish tank as shown above?

- A) W
- B) X
- ✓ C) Y
- D) Z

Question Type: Multiple Choice
Randomize Answers: No
Date Added: Tue 27th Jul 2021
Last Modified: N/A
QID#: 28,531,741

[Answers](#) | [Edit](#) | [Duplicate](#) | [Used In](#) | [Reorder](#)

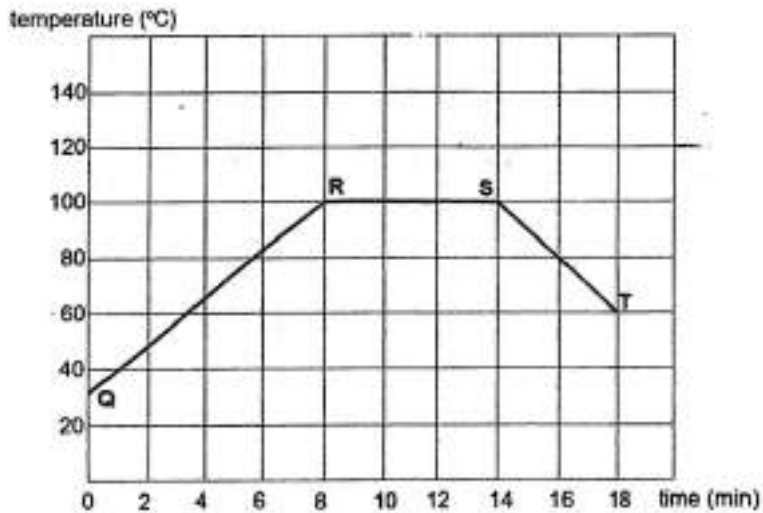
[Remove From Test](#)

Question 20

Primary 5 Science » Primary 5 Science (Term 4)

2 pts

The graph below shows the change in the temperature of water in a container, as it was brought to boil and then left to cool.



Based on the graph above, which of the following statements are correct?

- A Water gained heat from Q to R.
- B Water turned into steam between R and S.
- C Evaporation of water did not take place between S and T.

- ✓ A) A and B only
- B) A and C only
- C) B and C only
- D) A, B and C

Question Type: Multiple Choice
 Randomize Answers: No
 Date Added: Tue 27th Jul 2021
 Last Modified: N/A
 QID#: 28,531,742

[Answers](#) | [Edit](#) | [Duplicate](#) | [Used In](#) | [Reorder](#)

[Remove From Test](#)

Question 21

Primary 5 Science » Primary 5 Science (Term 4)

2 pts

A scientist observed that the temperature of air on Earth has increased over the last 50 years.

Which of the following activities could have caused the increase in the temperature?

- A An increase in the planting of trees
- B An increase in the use of air-conditioners
- C An increase in the number of vehicles on the road
- D An increase in the use of solar energy to produce electricity

- A) A and B only
- ✓ B) B and C only
- C) A and D only
- D) C and D only

Question Type: Multiple Choice
Randomize Answers: No
Date Added: Tue 27th Jul 2021
Last Modified: N/A
QID#: 28,531,743

[Answers](#) | [Edit](#) | [Duplicate](#) | [Used In](#) | [Reorder](#)

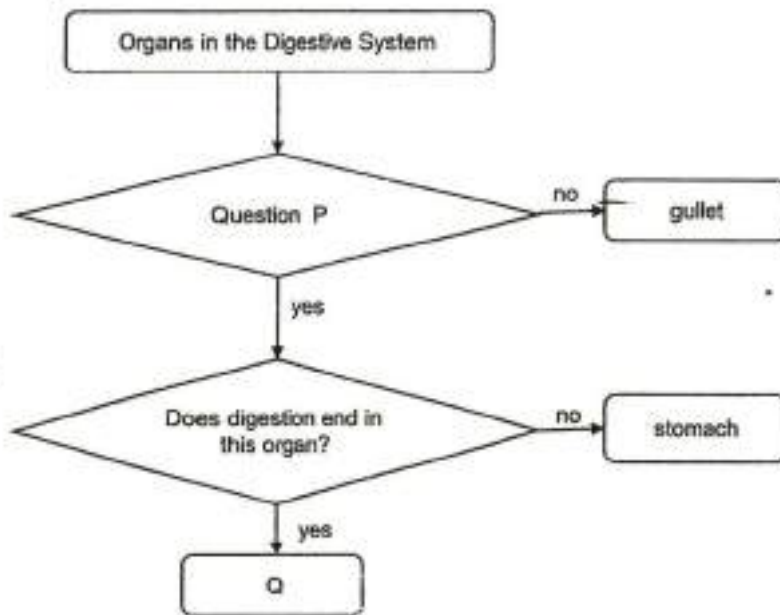
[Remove From Test](#)

Question 22

Primary 5 Science » Primary 5 Science (Term 4)

2 pts

Study the flow chart below.



Which one of the following is correct?

- ✓ A)

Question P	Organ Q
Does it produce digestive juice?	Small intestine
- B)

Question P	Organ Q
Does it break food into smaller pieces?	Mouth
- C)

Question P	Organ Q
Does it absorb water from undigested food?	Small intestine
- D)

Question P	Organ Q
Does it lead food to the stomach?	Large intestine

Question Type: Multiple Choice
Randomize Answers: No
Date Added: Tue 27th Jul 2021
Last Modified: N/A
QID#: 28,531,744

[Answers](#) | [Edit](#) | [Duplicate](#) | [Used In](#) | [Reorder](#)

[Remove From Test](#)

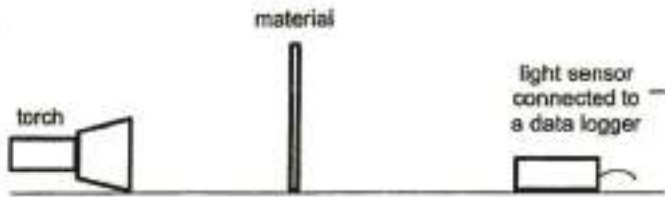
Question 23

Primary 5 Science » Primary 5 Science (Term 4)

2 pts

The following experiment was conducted in a dark room using a torch light that gives out 500 units of light.

Four different materials, P, Q, R and S, of the same thickness were placed between the torch and the light sensor connected to a data logger.



The amount of light that was detected by the data logger was shown in the table below.

Material	P	Q	R	S
Amount of light detected (units)	480	250	90	0

Which one of the materials can be used to make the door of a room such that people on the outside cannot see what is happening inside the room?

- A) P
- B) Q
- C) R
- ✓ D) S

Question Type: Multiple Choice
 Randomize Answers: No
 Date Added: Tue 27th Jul 2021
 Last Modified: N/A
 QID#: 28,531,745

[Answers](#) |
 [Edit](#) |
 [Duplicate](#) |
 [Used In](#) |
 [Reorder](#)

[Remove From Test](#)

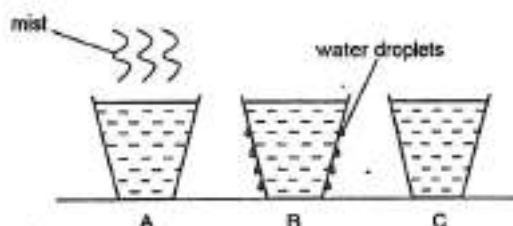
Question 24

Primary 5 Science » Primary 5 Science (Term 4)

2 pts

Mary poured water at different temperatures into three identical cups A, B and C and placed the cups on a table at room temperature.

The diagram below shows how the cups looked like after 5 minutes.



Arrange the cups according to the temperature of the water in the cups, from the highest temperature to the lowest temperature.

- ✓ A) A, C, B
- B) C, B, A

- C) A, B, C
- D) B, C, A

Question Type: Multiple Choice
Randomize Answers: No
Date Added: Tue 27th Jul 2021
Last Modified: N/A
QID#: 28,531,746

[Answers](#) | [Edit](#) | [Duplicate](#) | [Used In](#) | [Reorder](#)

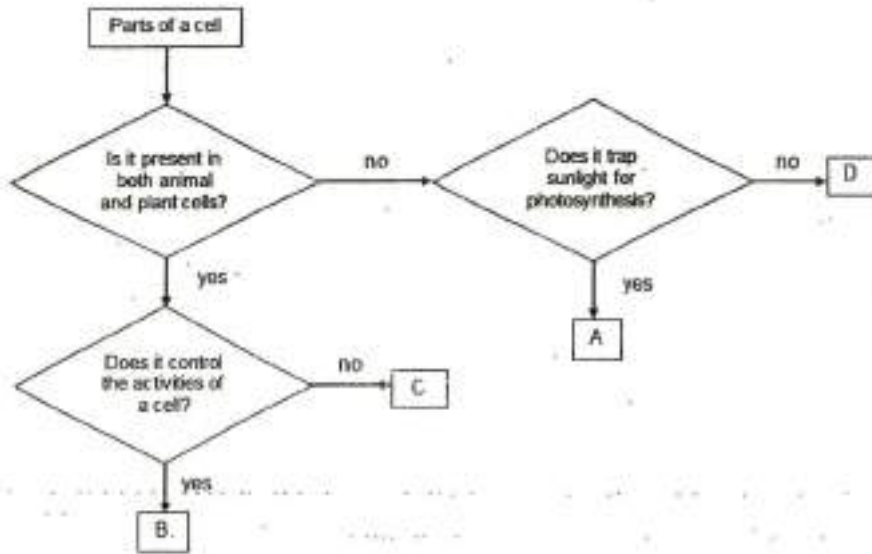
[Remove From Test](#)

Question 25

Primary 5 Science » Primary 5 Science (Term 4)

2 pts

The flow chart below identifies different parts (A, B, C and D) of a cell.



Which one of the following correctly represents the nucleus and the cell wall?

- A)

Nucleus	Cell Wall
B	A
- B)

Nucleus	Cell Wall
C	A
- ✓ C)

Nucleus	Cell Wall
B	D
- D)

Nucleus	Cell Wall
C	D

Question Type: Multiple Choice
Randomize Answers: No
Date Added: Tue 27th Jul 2021
Last Modified: N/A
QID#: 28,531,747

Question 26

Primary 5 Science » Primary 5 Science (Term 4)

2 pts

Diagram 1 shows a root cell of a plant.

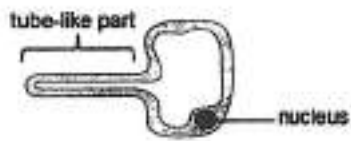


Diagram 1

Diagram 2 shows cells of a leaf.

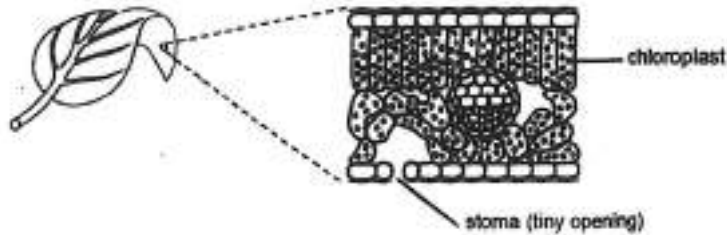


Diagram 2

The table below shows the parts and functions of the root and leaf cells.

	Description of part	Function
A	The root cell has a tube-like part.	To increase surface area to absorb more water to make food.
B	The presence of numerous tiny openings in the leaf.	To take in oxygen to make food.
C	The presence of chlorophyll in the chloroplasts in the leaf cells.	To absorb sunlight to make food.

Based on the information given, which of the following is correct?

- A) A and B only
 ✓ B) A and C only
 C) B and C only
 D) A, B and C

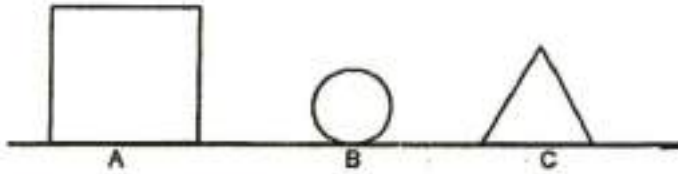
Question Type: Multiple Choice
Randomize Answers: No
Date Added: Tue 27th Jul 2021
Last Modified: N/A
QID#: 28,531,748

Question 27

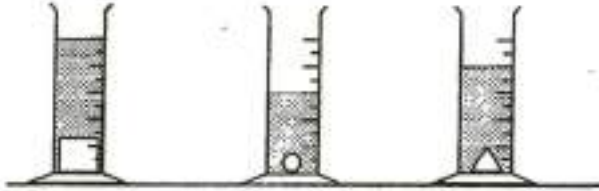
Primary 5 Science » Primary 5 Science (Term 4)

2 pts

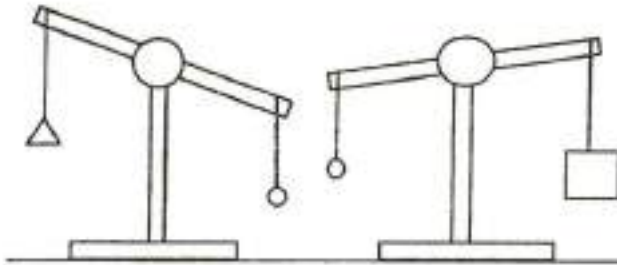
Benny has three objects, A, B and C, as shown below.



He placed these objects into similar measuring cylinders, each containing 10 ml of water.



He compared the mass of these objects as shown below.



Which of the following correctly identifies the object with the largest volume and the object with the largest mass?

- A)

Largest volume	Largest mass
A	A
- ✓ B)

Largest volume	Largest mass
A	B
- C)

Largest volume	Largest mass
B	A
- D)

Largest volume	Largest mass
C	B

Question Type: Multiple Choice
 Randomize Answers: No
 Date Added: Tue 27th Jul 2021
 Last Modified: N/A
 QID#: 28,531,749

Question 28

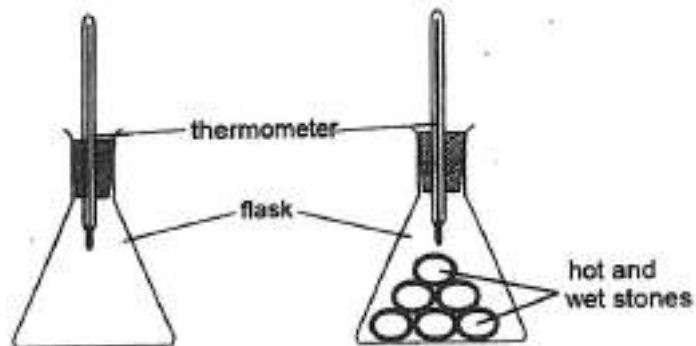
Primary 5 Science » Primary 5 Science (Term 4)

2 pts

Swee Lin recorded the temperature of air inside the flask.

Then, she placed some stones that are both hot and wet in the flask.

Then she immediately closed the flask such that it became air-tight.



What would likely happen to the air inside the flask after 1 minute?

The air inside the flask would _____.

- A lose heat
- B gain heat
- C contain less water vapour
- D contain more water vapour

- A) A and C only
- B) B and C only
- C) A and D only
- ✓ D) B and D only

Question Type: Multiple Choice
Randomize Answers: No
Date Added: Tue 27th Jul 2021
Last Modified: N/A
QID#: 28,531,750

[Answers](#) | [Edit](#) | [Duplicate](#) | [Used In](#) | [Reorder](#)

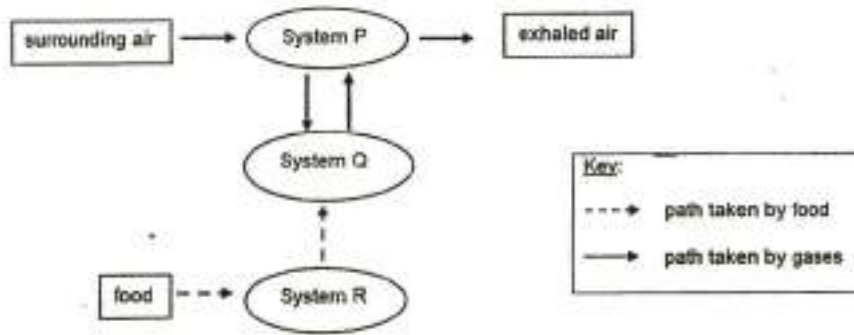
[Remove From Test](#)

Question 29

Primary 5 Science » Primary 5 Science (Term 4)

2 pts

The diagram below shows how food, oxygen and carbon dioxide are transported in the human body.



Which systems do P, Q and R represent?

- A)

P	Q	R
circulatory	respiratory	digestive
- B)

P	Q	R
digestive	circulatory	respiratory
- ✓ C)

P	Q	R
respiratory	circulatory	digestive
- D)

P	Q	R
respiratory	digestive	circulatory

Question Type: Multiple Choice
Randomize Answers: No
Date Added: Tue 27th Jul 2021
Last Modified: N/A
QID#: 28,531,751

[Answers](#) | [Edit](#) | [Duplicate](#) | [Used In](#) | [Reorder](#)

[Remove From Test](#)

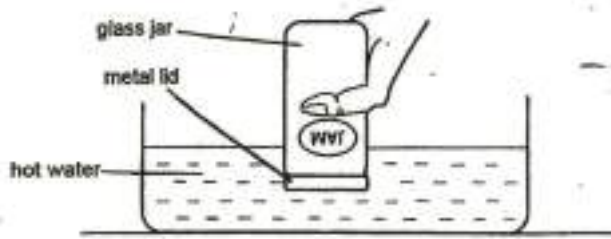
Question 30

Primary 5 Science » Primary 5 Science (Term 4)

0 pts

A metal lid was fitted tightly on a glass jar.

Mani placed the lid and part of the jar into a container of hot water as shown in the diagram below.



After a few minutes, Mani could remove the metal lid easily. [2]

Explain why.

This question is designed for extended answers that parent/ teacher will have to assign and guide child to attempt after the test has been completed.

Grading: This question type is not graded on this system and will not affect the final score as it was designed in such a way that it requires manual assistance.

Question Type: Essay
Date Added: Tue 27th Jul 2021
Last Modified: N/A
QID#: 28,531,753

Correctly answered feedback

The metal lid gained more heat and expanded more than the glass jar.

Incorrectly answered feedback

The metal lid gained more heat and expanded more than the glass jar.

[Answers](#) | [Edit](#) | [Duplicate](#) | [Used In](#) | [Reorder](#)

[Remove From Test](#)

Question 31

Primary 5 Science » Primary 5 Science (Term 4)

0 pts

Jeff noticed that his brother usually removes the shoe laces and opens up his wet shoes, as shown in the diagram below, to dry the shoes more quickly.



Explain how removing the shoe laces and opening up the shoes help them to dry more quickly. [1]

This question is designed for extended answers that parent/ teacher will have to assign and guide child to attempt after the test has been completed.

Grading: This question type is not graded on this system and will not affect the final score as it was designed in such a way that it requires manual assistance.

Question Type: Essay
Date Added: Tue 27th Jul 2021
Last Modified: N/A
QID#: 28,531,754

Correctly answered feedback

The exposed surface area of the water in the wet shoe is larger so the water evaporates faster.

Incorrectly answered feedback

The exposed surface area of the water in the wet shoe is larger so the water evaporates faster.

[Answers](#) | [Edit](#) | [Duplicate](#) | [Used In](#) | [Reorder](#)

[Remove From Test](#)

Question 32

Primary 5 Science » Primary 5 Science (Term 4)

1 pt

Jeff placed one of his wet shoes, as shown in the diagram below, near an open window to dry.



State the process that allows the wet shoe to become dry after a few hours.

Accepted answers:

✓ Evaporation

Question Type: Free Text
Date Added: Tue 27th Jul 2021
Last Modified: N/A
QID#: 28,531,771

[Answers](#) | [Edit](#) | [Duplicate](#) | [Used In](#) | [Reorder](#)

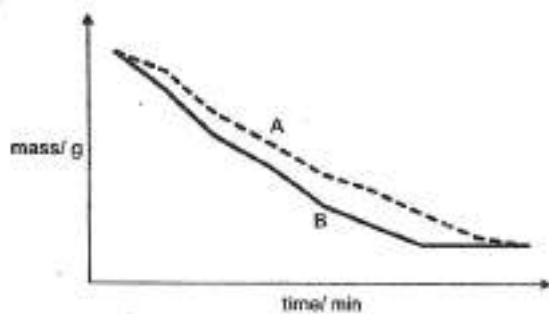
[Remove From Test](#)

Question 33

Primary 5 Science » Primary 5 Science (Term 4)

2 pts

Another wet shoe was placed in a spot near the open window under direct sunlight.



Which one of the graphs, A or B, shows the mass of the shoe that was exposed to direct sunlight?

Explain your answer.

(2)

Accepted answers:

✓ Graph B

✓ B

Question Type: Free Text
 Date Added: Tue 27th Jul 2021
 Last Modified: N/A
 QID#: 28,531,772

Correctly answered feedback

Claim: Graph B

Evidence: The mass of the shoe decreased more quickly.

Reason: The temperature of the surroundings was higher so the water evaporated faster.

Incorrectly answered feedback

Claim: Graph B

Evidence: The mass of the shoe decreased more quickly.

Reason: The temperature of the surroundings was higher so the water evaporated faster.

[Answers](#) | [Edit](#) | [Duplicate](#) | [Used In](#) | [Reorder](#)

[Remove From Test](#)

Question 34

Primary 5 Science » Primary 5 Science (Term 4)

0 pts

Mrs. Teo bought a few hot buns which were packed in a Styrofoam box. When she opened the box, she noticed water droplets forming on the underside of the cover.



water droplets formed
on the underside of
cover

Mrs. Teo noticed that the buns became soaked with water after some time.
 Explain how this happened. (2 marks)

This question is designed for extended answers that parent/ teacher will have to assign and guide child to attempt after the test has been completed.

Grading: This question type is not graded on this system and will not affect the final score as it was designed in such a way that it requires manual assistance.

Question Type: Essay
 Date Added: Tue 27th Jul 2021
 Last Modified: N/A
 QID#: 28,531,755

Correctly answered feedback

Water from the buns gained heat and evaporated into water vapour. The hot water vapour in the box came in contact with the cooler underside of the cover, lost heat and condensed and the water (droplets) dripped back onto the buns.

Incorrectly answered feedback

Water from the buns gained heat and evaporated into water vapour. The hot water vapour in the box came in contact with the cooler underside of the cover, lost heat and condensed and the water (droplets) dripped back onto the buns.

[Answers](#) | [Edit](#) | [Duplicate](#) | [Used In](#) | [Reorder](#)

[Remove From Test](#)

Question 35

Primary 5 Science » Primary 5 Science (Term 4)

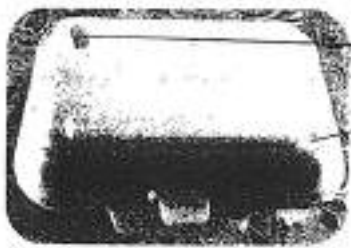
0 pts

Mrs. Teo bought a few hot buns which were packed in a Styrofoam box. When she opened the box, she noticed water droplets forming on the underside of the cover.



water droplets formed on the underside of cover

Staff holders would make holes in the styrofoam box containing hot buns.



holes made in the Styrofoam box

Explain how making holes in the Styrofoam box will prevent the buns from becoming too wet. [2]

This question is designed for extended answers that parent/ teacher will have to assign and guide child to attempt after the test has been completed.

Grading: This question type is not graded on this system and will not affect the final score as it was designed in such a way that it requires manual assistance.

Question Type: Essay
Date Added: Tue 27th Jul 2021
Last Modified: N/A
QID#: 28,531,756

Correctly answered feedback

Water vapour could escape so less water vapour condensed on the underside of the box.

Incorrectly answered feedback

Water vapour could escape so less water vapour condensed on the underside of the box.

[Answers](#) | [Edit](#) | [Duplicate](#) | [Used In](#) | [Reorder](#)

[Remove From Test](#)

Question 36

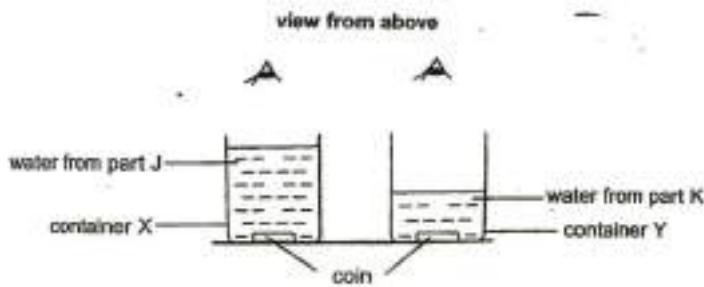
Primary 5 Science » Primary 5 Science (Term 4)

0 pts

Salim wanted to study how clear the water in a river was. He collected water from two different parts of the river, J and K.

He used two identical containers X and Y and placed a coin at the bottom of each container. Then he poured water from J into container X until the coin could no longer be seen from the top.

He repeated the experiment using water from K with container Y. The results of the experiment are shown below.



Containers X and Y are made of clear glass.

Explain why the material should be the same to ensure a fair test. (1 mark)

This question is designed for extended answers that parent/ teacher will have to assign and guide child to attempt after the test has been completed.

Grading: This question type is not graded on this system and will not affect the final score as it was designed in such a way that it requires manual assistance.

Question Type: Essay
Date Added: Tue 27th Jul 2021
Last Modified: N/A
QID#: 28,531,757

Correctly answered feedback

The amount of light passing through (the containers) will be the same.

Incorrectly answered feedback

The amount of light passing through (the containers) will be the same.

[Answers](#) | [Edit](#) | [Duplicate](#) | [Used In](#) | [Reorder](#)

[Remove From Test](#)

Question 37

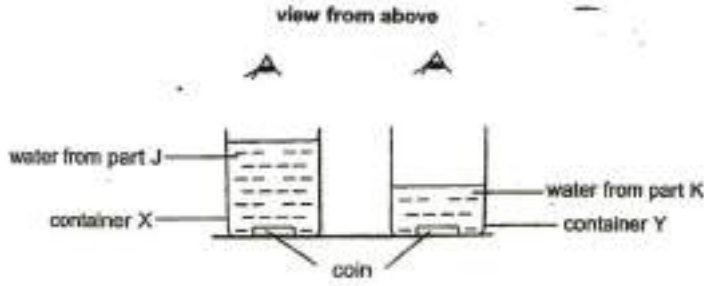
Primary 5 Science » Primary 5 Science (Term 4)

2 pts

Salim wanted to study how clear the water in a river was. He collected water from two different parts of the river, J and K.

He used two identical containers X and Y and placed a coin at the bottom of each container. Then he poured water from J into container X until the coin could no longer be seen from the top.

He repeated the experiment using water from K with container Y. The results of the experiment are shown below.



Which container (X or Y) has clearer water? Explain your answer. (2 marks)

Accepted answers:

- ✓ X
- ✓ Container X

Question Type: Free Text
 Date Added: Tue 27th Jul 2021
 Last Modified: N/A
 QID#: 28,531,773

Correctly answered feedback

X. More water (from J) has to be poured in before the coin can no longer be seen.

Incorrectly answered feedback

X. More water (from J) has to be poured in before the coin can no longer be seen.

Answers | Edit | Duplicate | Used In | Reorder

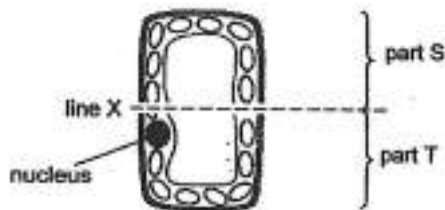
Remove From Test

Question 38

Primary 5 Science » Primary 5 Science (Term 4)

0 pts

Leela wanted to do an investigation on some plant cells. She cut the cells at line X as shown below.



After a few days, she recorded her observation in the table below.

Part S	Part T
Shrunk and died	Cell remained alive, and the area around line X grew.

Explain why part T was able to continue to grow while part S died. (1 mark)

This question is designed for extended answers that parent/ teacher will have to assign and guide child to attempt after the test has been completed.

Grading: This question type is not graded on this system and will not affect the final score as it was designed in such a way that it requires manual assistance.

Question Type: Essay
Date Added: Tue 27th Jul 2021
Last Modified: N/A
QID#: 28,531,758

Correctly answered feedback

The nucleus in part T helps the cell to grow / survive.

Incorrectly answered feedback

The nucleus in part T helps the cell to grow / survive.

[Answers](#) | [Edit](#) | [Duplicate](#) | [Used In](#) | [Reorder](#)

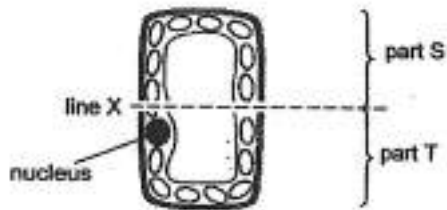
[Remove From Test](#)

Question 39

Primary 5 Science » Primary 5 Science (Term 4)

0 pts

Leela wanted to do an investigation on some plant cells. She cut the cells at line X as shown below.



After a few days, she recorded her observation in the table below.

Part S	Part T
Shrunk and died	Cell remained alive, and the area around line X grew.

State a possible aim for Leela's experiment. (1 mark)

This question is designed for extended answers that parent/ teacher will have to assign and guide child to attempt after the test has been completed.

Grading: This question type is not graded on this system and will not affect the final score as it was designed in such a way that it requires manual assistance.

Question Type: Essay
Date Added: Tue 27th Jul 2021
Last Modified: N/A
QID#: 28,531,759

Correctly answered feedback

To find out if the nucleus is needed for growth / survival of a cell.

Incorrectly answered feedback

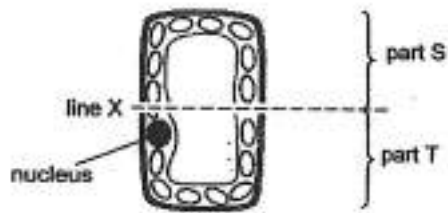
To find out if the nucleus is needed for growth / survival of a cell.

Question 40

Primary 5 Science » Primary 5 Science (Term 4)

0 pts

Leela wanted to do an investigation on some plant cells. She cut the cells at line X as shown below.



After a few days, she recorded her observation in the table below.

Part S	Part T
Shrunk and died	Cell remained alive, and the area around line X grew.

State the main function of the cell membrane. (1 mark)

This question is designed for extended answers that parent/ teacher will have to assign and guide child to attempt after the test has been completed.

Grading: This question type is not graded on this system and will not affect the final score as it was designed in such a way that it requires manual assistance.

Question Type: Essay
Date Added: Tue 27th Jul 2021
Last Modified: N/A
QID#: 28,531,760

Correctly answered feedback

Cell membrane controls the movement of substances in and out of the cell.

Incorrectly answered feedback

Cell membrane controls the movement of substances in and out of the cell.

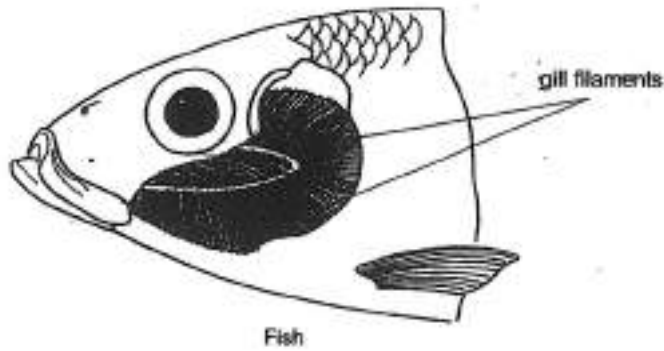
Question 41

Primary 5 Science » Primary 5 Science (Term 4)

0 pts

The gills have many filaments to help in gaseous exchange as shown in the diagram below.

They are thin and has a large supply of blood flowing through them.



What is the advantage of having numerous gill filaments for gaseous exchange?

[2]

This question is designed for extended answers that parent/ teacher will have to assign and guide child to attempt after the test has been completed.

Grading: This question type is not graded on this system and will not affect the final score as it was designed in such a way that it requires manual assistance.

Question Type: Essay
 Date Added: Tue 27th Jul 2021
 Last Modified: N/A
 QID#: 28,531,762

Correctly answered feedback

It increases the surface area for (more) oxygen to be taken in and (more) carbon dioxide to be removed.

Incorrectly answered feedback

It increases the surface area for (more) oxygen to be taken in and (more) carbon dioxide to be removed.

[Answers](#) | [Edit](#) | [Duplicate](#) | [Used In](#) | [Reorder](#)

[Remove From Test](#)

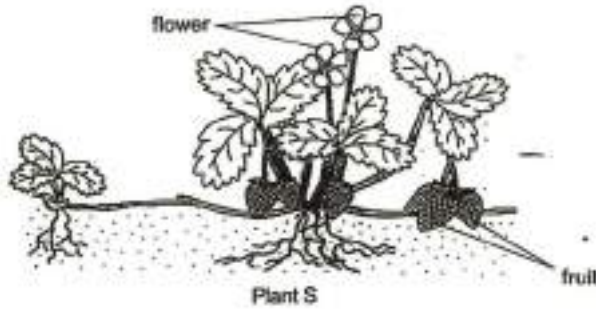
Question 42

Primary 5 Science » Primary 5 Science (Term 4)

0 pts

Kim observed plant S shown in the diagram below.

She noticed that the fruit was of a bright red colour and was very juicy. It also contained small and hard seeds.



Bird Z feeds on the nectar found in the flowers of plant S. Bird Z lives in the nests built on top of tree K in the nearby forest.

When a large number of tree K was cleared for building houses, bird Z flew to another forest far away to live there.

Based on the information given, explain how a large number of bird Z leaving the forest could affect the growth of plant S. (2 marks)

This question is designed for extended answers that parent/ teacher will have to assign and guide child to attempt after the test has been completed.

Grading: This question type is not graded on this system and will not affect the final score as it was designed in such a way that it requires manual assistance.

Question Type: Essay
 Date Added: Tue 27th Jul 2021
 Last Modified: N/A
 QID#: 28,531,763

Correctly answered feedback

Fewer bird Z will pollinate the flowers of plant S, fewer flowers would develop into fruits so fewer seeds will be dispersed.

Incorrectly answered feedback

Fewer bird Z will pollinate the flowers of plant S, fewer flowers would develop into fruits so fewer seeds will be dispersed.

[Answers](#) | [Edit](#) | [Duplicate](#) | [Used In](#) | [Reorder](#)

[Remove From Test](#)

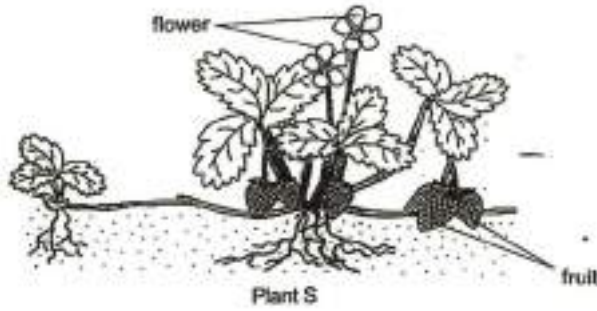
Question 43

Primary 5 Science » Primary 5 Science (Term 4)

0 pts

Kim observed plant S shown in the diagram below.

She noticed that the fruit was of a bright red colour and was very juicy. It also contained small and hard seeds.



Bird Z feeds on the nectar found in the flowers of plant S. Bird Z lives in the nests built on top of tree K in the nearby forest.

When a large number of tree K was cleared for building houses, bird Z flew to another forest far away to live there.

Explain why plants disperse their seeds as far away as possible. (1 mark)

This question is designed for extended answers that parent/ teacher will have to assign and guide child to attempt after the test has been completed.

Grading: This question type is not graded on this system and will not affect the final score as it was designed in such a way that it requires manual assistance.

Question Type: Essay
 Date Added: Tue 27th Jul 2021
 Last Modified: N/A
 QID#: 28,531,764

Correctly answered feedback

It prevents overcrowding and competition for light / space / water / nutrients.

Incorrectly answered feedback

It prevents overcrowding and competition for light / space / water / nutrients.

[Answers](#) | [Edit](#) | [Duplicate](#) | [Used In](#) | [Reorder](#)

[Remove From Test](#)

Question 44

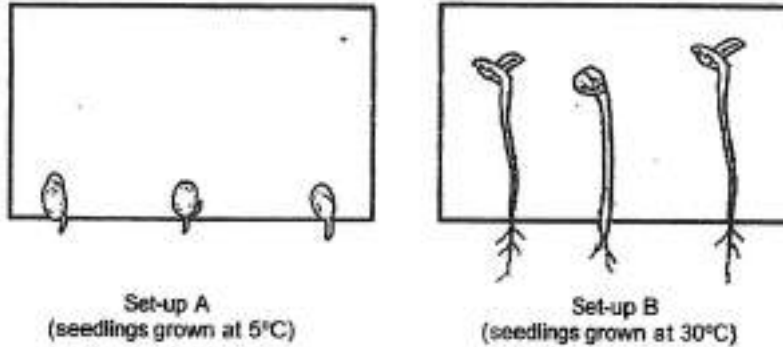
Primary 5 Science » Primary 5 Science (Term 4)

0 pts

Joan carried out an investigation, using the steps listed below, to find out the effects of temperature on plant growth.

- Two sets of soaked seeds were placed on moist paper in containers.
- The containers were wrapped in foil to keep out sunlight.
- One container was placed in a refrigerator at 5°C for three days.
- The other container was left on a table at room temperature of 30°C for three days.

Diagrams A and B show the two set-ups of the seedlings after three days.



Describe and explain one difference in the appearance of the seedlings in both set-ups. (2 marks)

This question is designed for extended answers that parent/ teacher will have to assign and guide child to attempt after the test has been completed.

Grading: This question type is not graded on this system and will not affect the final score as it was designed in such a way that it requires manual assistance.

Question Type: Essay
 Date Added: Tue 27th Jul 2021
 Last Modified: N/A
 QID#: 28,531,765

Correctly answered feedback

Describe: The seedlings in set-up A have shorter roots while the seedlings in B have longer roots.

Explain: The seedlings in set-up A did not receive enough warmth to germinate as quickly as compared to the seedlings in set-up B.

Incorrectly answered feedback

Describe: The seedlings in set-up A have shorter roots while the seedlings in B have longer roots.

Explain: The seedlings in set-up A did not receive enough warmth to germinate as quickly as compared to the seedlings in set-up B.

[Answers](#) | [Edit](#) | [Duplicate](#) | [Used In](#) | [Reorder](#)

[Remove From Test](#)

Question 45

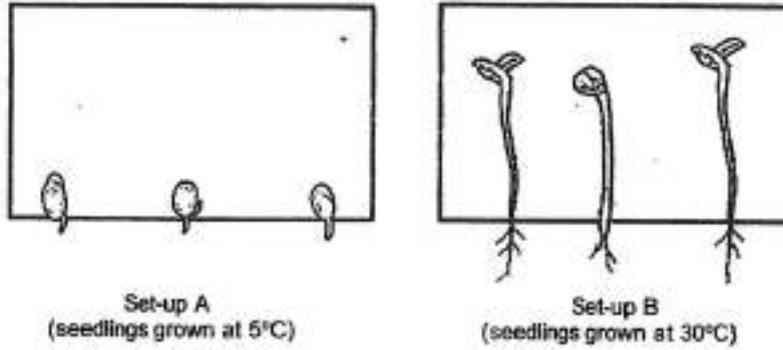
Primary 5 Science » Primary 5 Science (Term 4)

0 pts

Joan carried out an investigation, using the steps listed below, to find out the effects of temperature on plant growth.

- Two sets of soaked seeds were placed on moist paper in containers.
- The containers were wrapped in foil to keep out sunlight.
- One container was placed in a refrigerator at 5°C for three days.
- The other container was left on a table at room temperature of 30°C for three days.

Diagrams A and B show the two set-ups of the seedlings after three days.



Explain why it is important for Joan to measure the length of more than one seedling in each set-up for her investigation. (1 mark)

This question is designed for extended answers that parent/ teacher will have to assign and guide child to attempt after the test has been completed.

Grading: This question type is not graded on this system and will not affect the final score as it was designed in such a way that it requires manual assistance.

Question Type: Essay
 Date Added: Tue 27th Jul 2021
 Last Modified: N/A
 QID#: 28,531,767

Correctly answered feedback

To ensure that her results are more reliable.

Incorrectly answered feedback

To ensure that her results are more reliable.

[Answers](#) | [Edit](#) | [Duplicate](#) | [Used In](#) | [Reorder](#)

[Remove From Test](#)

Question 46

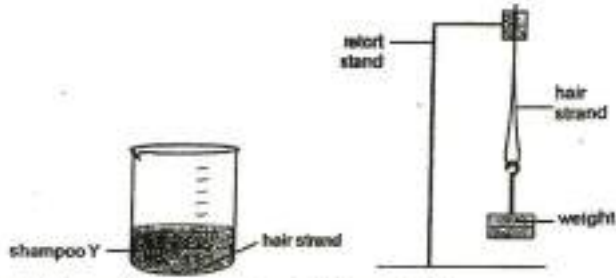
Primary 5 Science » Primary 5 Science (Term 4)

0 pts

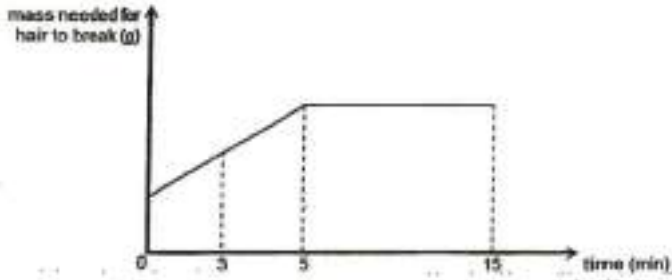
Paul wanted to find out how the amount of time a strand of hair is soaked in shampoo Y affects the strength of the hair.

He soaked 3 similar strands of hair in shampoo Y and tested it at 3 different points in time.

Then he added weights to each strand of hair until it broke.



He charted the results of his experiment in the graph below.



For a new experiment, Paul wants to investigate how different types of shampoo (X, Y and Z) affects the strength of the hair.

Suggest two changes Paul has to make to the set-ups in the current experiment so that he can carry out the new experiment fairly. [2]

Change 1 : _____

Change 2 : _____

This question is designed for extended answers that parent/ teacher will have to assign and guide child to attempt after the test has been completed.

Grading: This question type is not graded on this system and will not affect the final score as it was designed in such a way that it requires manual assistance.

Question Type: Essay
 Date Added: Tue 27th Jul 2021
 Last Modified: N/A
 QID#: 28,531,768

Correctly answered feedback

- Length of time hair is soaked in each shampoo must be the same.
- He should use the same amount of each type of shampoo (X Y and Z).

Incorrectly answered feedback

- Length of time hair is soaked in each shampoo must be the same.
- He should use the same amount of each type of shampoo (X Y and Z).

Question 47

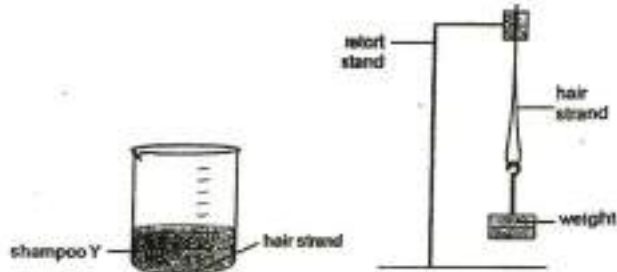
Primary 5 Science » Primary 5 Science (Term 4)

0 pts

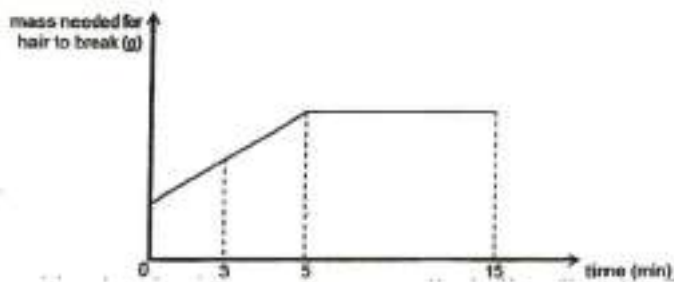
Paul wanted to find out how the amount of time a strand of hair is soaked in shampoo Y affects the strength of the hair.

He soaked 3 similar strands of hair in shampoo Y and tested it at 3 different points in time.

Then he added weights to each strand of hair until it broke.



He charted the results of his experiment in the graph below.



Based on the information given in the graph above, describe the relationship between the length of time the strand of hair was soaked in the shampoo and the strength of the hair. (2 marks)

This question is designed for extended answers that parent/ teacher will have to assign and guide child to attempt after the test has been completed.

Grading: This question type is not graded on this system and will not affect the final score as it was designed in such a way that it requires manual assistance.

Question Type: Essay
 Date Added: Tue 27th Jul 2021
 Last Modified: N/A
 QID#: 28,531,766

Correctly answered feedback

For the first 5 minutes, the longer the hair is soaked in the shampoo, the strength of the hair increases.
 After 5 minutes, the time hair is soaked in shampoo does not affect the strength of the hair.

Incorrectly answered feedback

For the first 5 minutes, the longer the hair is soaked in the shampoo, the strength of the hair increases.
 After 5 minutes, the time hair is soaked in shampoo does not affect the strength of the hair.

Question 48

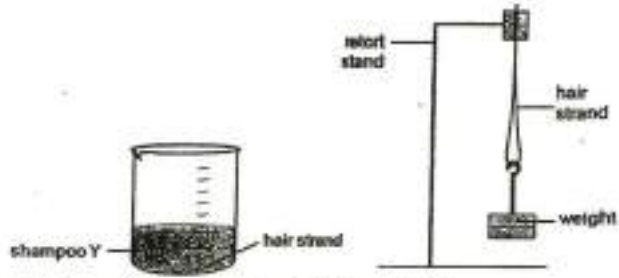
Primary 5 Science » Primary 5 Science (Term 4)

1 pt

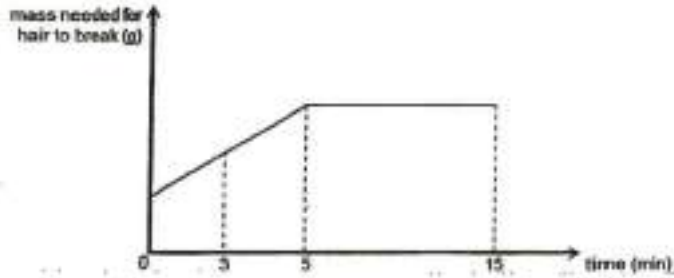
Paul wanted to find out how the amount of time a strand of hair is soaked in shampoo Y affects the strength of the hair.

He soaked 3 similar strands of hair in shampoo Y and tested it at 3 different points in time.

Then he added weights to each strand of hair until it broke.



He charted the results of his experiment in the graph below.



Name the dependent variable measured in this experiment.

Accepted answers:

✓ Strength of hair

Question Type: Free Text
 Date Added: Tue 27th Jul 2021
 Last Modified: N/A
 QID#: 28,531,775

[Answers](#) | [Edit](#) | [Duplicate](#) | [Used In](#) | [Reorder](#)

[Remove From Test](#)

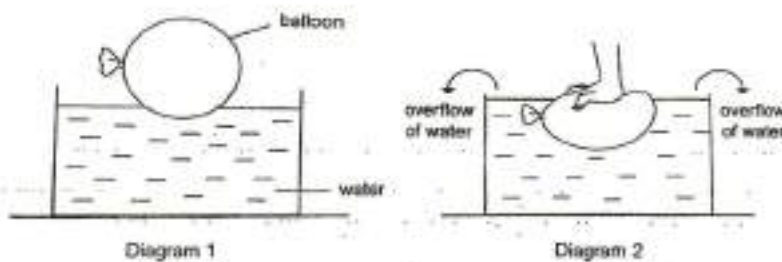
Question 49

Primary 5 Science » Primary 5 Science (Term 4)

0 pts

Johnny filled a balloon with substance A and placed it on the water in a glass container. He observed that the balloon was floating on the water as shown in diagram 1.

When Johnny pushed the balloon downwards, some water in the container overflowed as shown in diagram 2.



State two other properties of substance A that can be inferred from Johnny's experiment as shown in diagram 2. [2]

This question is designed for extended answers that parent/ teacher will have to assign and guide child to attempt after the test has been completed.

Grading: This question type is not graded on this system and will not affect the final score as it was designed in such a way that it requires manual assistance.

Question Type: Essay
 Date Added: Tue 27th Jul 2021
 Last Modified: N/A
 QID#: 28,531,769

Correctly answered feedback

- (i) Substance A takes up space / has volume.
- (ii) Substance A has no definite shape / can change its shape.

Incorrectly answered feedback

- (i) Substance A takes up space / has volume.
- (ii) Substance A has no definite shape / can change its shape.

[Answers](#) | [Edit](#) | [Duplicate](#) | [Used In](#) | [Reorder](#)

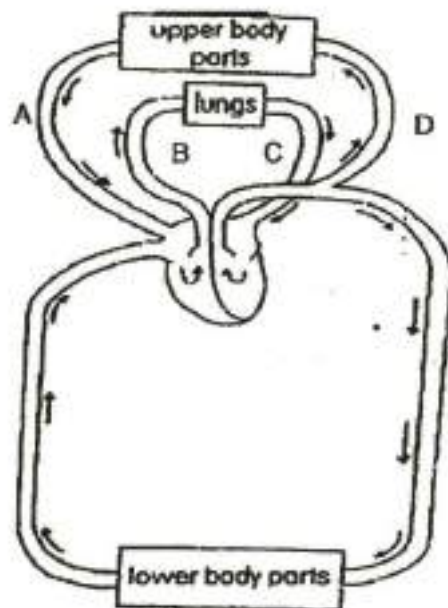
[Remove From Test](#)

Question 50

Primary 5 Science » Primary 5 Science (Term 4)

0 pts

The diagram below shows blood flow in the human circulatory system.



Jenny noticed that her heart rate increases after climbing the stairs. Explain why this happens. (2 marks)

This question is designed for extended answers that parent/ teacher will have to assign and guide child to attempt after the test has been completed.

Grading: This question type is not graded on this system and will not affect the final score as it was designed in such a way that it requires manual assistance.

Question Type: Essay
 Date Added: Tue 27th Jul 2021
 Last Modified: N/A

QID#: 28,531,761

Correctly answered feedback

Her heart has to pump blood faster to transport the digested food / oxygen to her legs / muscles and remove carbon dioxide / waste from her body.

Incorrectly answered feedback

Her heart has to pump blood faster to transport the digested food / oxygen to her legs / muscles and remove carbon dioxide / waste from her body.

[Answers](#) | [Edit](#) | [Duplicate](#) | [Used In](#) | [Reorder](#)

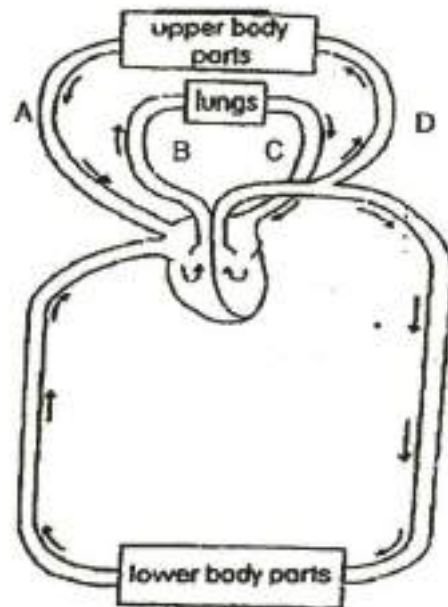
[Remove From Test](#)

Question 51

Primary 5 Science » Primary 5 Science (Term 4)

1 pt

The diagram below shows blood flow in the human circulatory system.



Which part (A, B, C or D) is likely to have the most amount of oxygen in the blood? Explain why. (1 mark)

Accepted answers:

- ✓ C
- ✓ Part C

Question Type: Free Text
Date Added: Tue 27th Jul 2021
Last Modified: N/A
QID#: 28,531,774

Correctly answered feedback

C. Oxygen has (just) been absorbed into the blood from / at the lungs.

Incorrectly answered feedback

C. Oxygen has (just) been absorbed into the blood from / at the lungs.

Answers | Edit | Duplicate | Used In | Reorder

Remove From Test

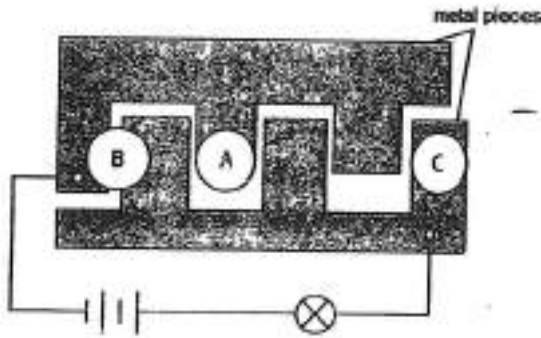
Question 52

Primary 5 Science » Primary 5 Science (Term 4)

3 pts

Ahmad made an electric circuit game board using two separate pieces of metal.

He observed that the bulb only lit up when he placed a metal disc correctly at one of the positions (A, B or C) shown in the diagram below.



Which one of the positions, A, B or C, would allow the bulb to light up when the metal disc is placed on it? Explain your answer.

Position : _____ [1]

Explain : _____ [2]

Accepted answers:

- ✓ B
- ✓ position B

Question Type: Free Text
 Date Added: Tue 27th Jul 2021
 Last Modified: N/A
 QID#: 28,531,776

Correctly answered feedback

Position: B
 Explain: Metal disc at position B connects the metal pieces to make it a closed circuit so electricity can pass through the circuit.

Incorrectly answered feedback

Position: B

Explain: Metal disc at position B connects the metal pieces to make it a closed circuit so electricity can pass through the circuit.

Answers | Edit | Duplicate | Used In | Reorder

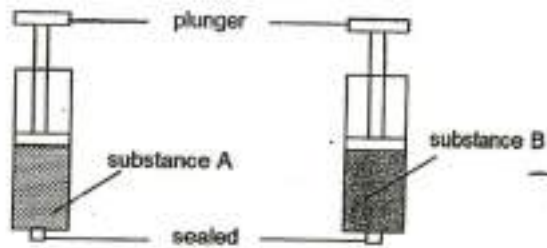
Remove From Test

Question 53

Primary 5 Science » Primary 5 Science (Term 4)

2 pts

Johnny filled two sealed syringes with equal amount of substances A and B as shown in the diagram below.



When Johnny pushed in the plunger, he observed that substance A can be compressed but not substance B.

Which state of matter (solid, liquid or gas) could substance B be? Explain why. (2 marks)

Accepted answers:

- ✓ Solid or liquid
- ✓ Liquid or solid
- ✓ Solid
- ✓ liquid

Question Type: Free Text
 Date Added: Tue 27th Jul 2021
 Last Modified: N/A
 QID#: 28,531,777

Correctly answered feedback

Solid or liquid
 Solid / liquid has a definite volume.

Incorrectly answered feedback

Solid or liquid
 Solid / liquid has a definite volume.

Answers | Edit | Duplicate | Used In | Reorder

Remove From Test

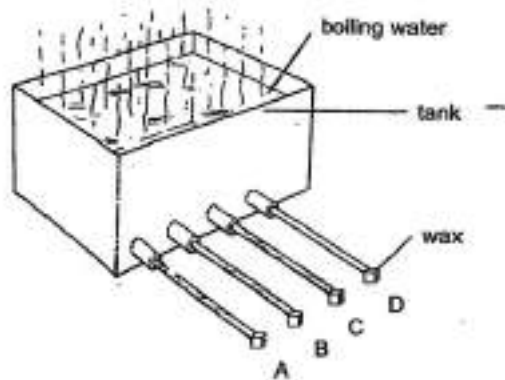
Question 54

Primary 5 Science » Primary 5 Science (Term 4)

1 pt

Four similar rods made of different materials, steel, iron, copper and plastic, were attached to a tank filled with hot water.

Four identical cubes of wax were attached to the ends of the four rods as shown in the diagram below.



The table below shows the time taken for the wax to melt.

Rod	Time taken for the wax to melt (min)
A	1.0
B	1.5
C	3.0 plastic
D	1.3

Which rod is likely made of plastic? Explain why.

Accepted answers:

- ✓ Rod C
- ✓ C

Question Type: Free Text
 Date Added: Tue 27th Jul 2021
 Last Modified: N/A
 QID#: 28,531,778

Correctly answered feedback

Claim: Rod C.

Evidence: Time taken for the wax to melt is the longest.

Reason: Plastic is the poorest conductor of heat.

Incorrectly answered feedback

Claim: Rod C.

Evidence: Time taken for the wax to melt is the longest.

Reason: Plastic is the poorest conductor of heat.

[Answers](#) |
 [Edit](#) |
 [Duplicate](#) |
 [Used In](#) |
 [Reorder](#)

[Remove From Test](#)

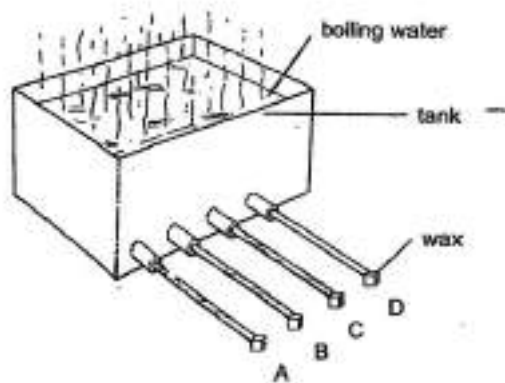
Question 55

Primary 5 Science » Primary 5 Science (Term 4)

0 pts

Four similar rods made of different materials, steel, iron, copper and plastic, were attached to a tank filled with hot water.

Four identical cubes of wax were attached to the ends of the four rods as shown in the diagram below.



The table below shows the time taken for the wax to melt.

Rod	Time taken for the wax to melt (min)
A	1.0
B	1.5
C	3.0 plastic
D	1.3

Describe the direction of heat flow in the experimental set-up shown above. (1 mark)

This question is designed for extended answers that parent/ teacher will have to assign and guide child to attempt after the test has been completed.

Grading: This question type is not graded on this system and will not affect the final score as it was designed in such a way that it requires manual assistance.

Question Type: Essay
 Date Added: Tue 27th Jul 2021
 Last Modified: N/A
 QID#: 28,531,770

Correctly answered feedback

Heat flows from the (boiling) water to the rod / wax.

Incorrectly answered feedback

Heat flows from the (boiling) water to the rod / wax.

[Answers](#) | [Edit](#) | [Duplicate](#) | [Used In](#) | [Reorder](#)

[Remove From Test](#)

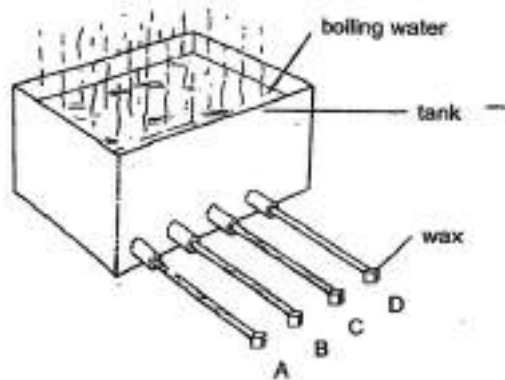
Question 56

Primary 5 Science » Primary 5 Science (Term 4)

1 pt

Four similar rods made of different materials, steel, iron, copper and plastic, were attached to a tank filled with hot water.

Four identical cubes of wax were attached to the ends of the four rods as shown in the diagram below.



The table below shows the time taken for the wax to melt.

Rod	Time taken for the wax to melt (min)
A	1.0
B	1.5
C	3.0 plastic
D	1.3

Based on the above experiment, state which material should be used to make cups to keep soft drinks cold for a long time.

Accepted answers:

✓ Plastic

Question Type: Free Text
Date Added: Tue 27th Jul 2021
Last Modified: N/A
QID#: 28,531,779

[Answers](#) | [Edit](#) | [Duplicate](#) | [Used In](#) | [Reorder](#)

[Remove From Test](#)